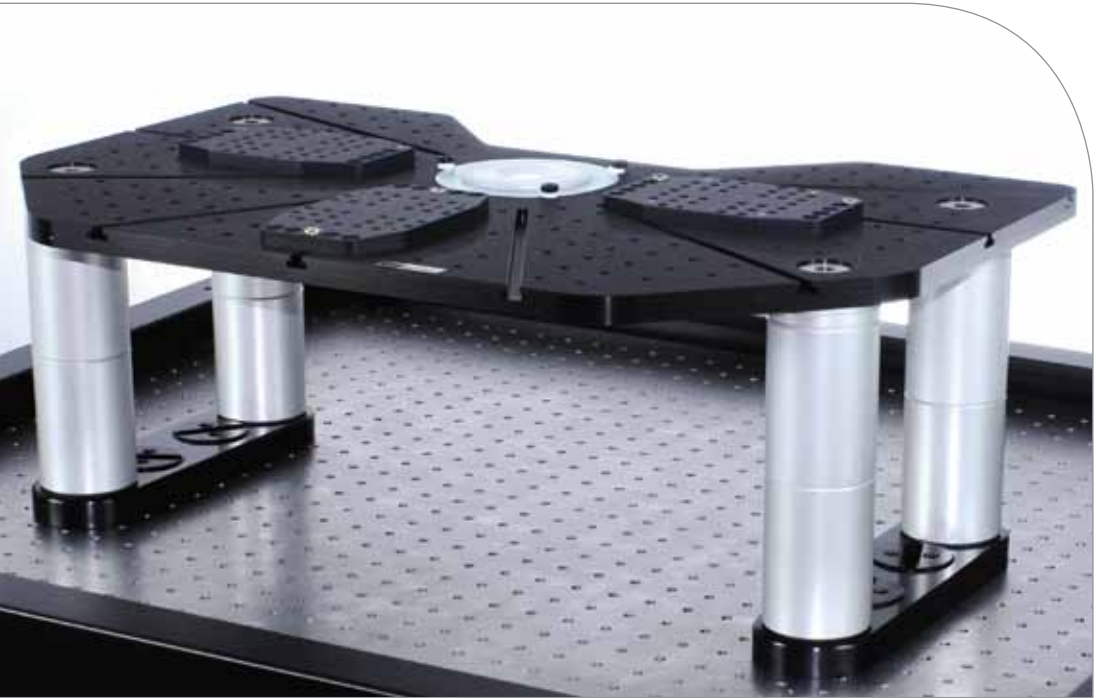


SlicePlatform Fixed Platform System

Rock solid stability



SlicePlatforms *for upright microscopes*

Scientifica's SlicePlatform is a carefully engineered, stable and versatile solution for mounting a full range of equipment for electrophysiology and imaging.

It is used in laboratories around the world and has proved universally popular as a stable foundation for patch clamp recordings and other applications. Compatible with upright microscopes from all major manufacturers, including Olympus, Zeiss, Nikon and Leica, the SlicePlatform is ready to easily integrate into your current rig.



The SlicePlatform, shown with the Scientifica SliceScope and PatchStars

Stable

The SlicePlatform's solid construction ensures minimal vibrations when attached to an anti-vibration table providing the perfect base for patch clamp applications and long-term imaging.

The sturdy legs and completely rigid anodised aluminium top plate provide the maximum stability for manipulators and samples.

Adjustable height

The SlicePlatform's legs are adjustable so that the top surface can be raised from 220 mm to 290 mm.

This allows the SlicePlatform to be easily placed under or around your chosen microscope at the optimum working height for your preparation.

Large, versatile mounting platform

The unique mounting carriage system of the SlicePlatform allows the user to precisely fix the manipulators as close to the sample as needed, as a result, the most can be made from a manipulator's travel range by starting in an ideal 'home' position.

The SlicePlatform's top plate features a tapped hole pattern. Either a M6 or 1/4"-20 threaded hole pattern can be specified, ensuring compatibility with your existing equipment.

Additional mounting carriages

The SlicePlatform proves a refreshingly simple solution for complex electrophysiology studies.

With stress-free compatibility with micromanipulators, perfusion equipment and anti-vibration tables, the SlicePlatform's unique sliding carriage design will ensure accurate and secure placement of equipment.

Conveniently, the mounting carriages then slide and secure in place around the sample plate.

Universal Motorised Stage *A strong partnership*

The Scientifica SlicePlatform is commonly used with the Scientifica range of microscope translators including the Universal Motorised Stage (UMS).

The UMS offers 50 mm of remote motorised translation of your entire microscope in X and Y axes via user interfaces or software.

For some microscope models, an optional motorised Z-axis focus module is also available to upgrade the manual focus.

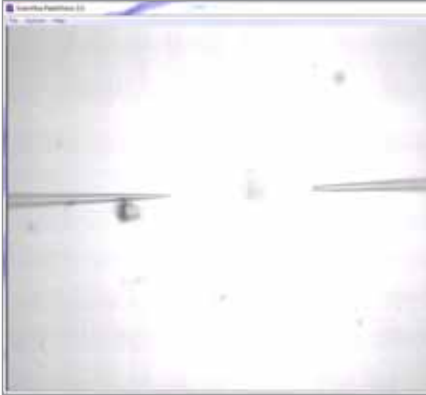
Featuring recallable memory positions and user customisation via LinLab software, the UMS is versatile enough to suit a wide range of microscopy applications, including imaging and electrophysiology.

The UMS is also compatible with many inverted microscopes, for which Scientifica can supply an alternative fixed platform. A manually controlled XY stage is also available.



Benefits

As a central component to your electrophysiology setup, the SlicePlatform will ensure complete stability during recordings and prove intuitive and problem free in operation.



Unique “follow” function

The unique “follow” function within Scientifica’s LinLab software can simplify navigation and the movement of multiple motorised devices around your sample.

This prevents extended searching for manipulators outside the field of view, saving valuable time. This feature enables the user to virtually ‘link’ multiple manipulators to the X & Y movement of the Scientifica UMS and the focus of your microscope.

When using the microscope stage to translate around your sample, the manipulators will automatically stay in your field of view.

Individual manipulators can then be ‘released’ at specified interest areas, while other manipulators continue to move in tandem with the UMS. This feature allows the researcher total freedom to view the sample without losing any areas of interest.

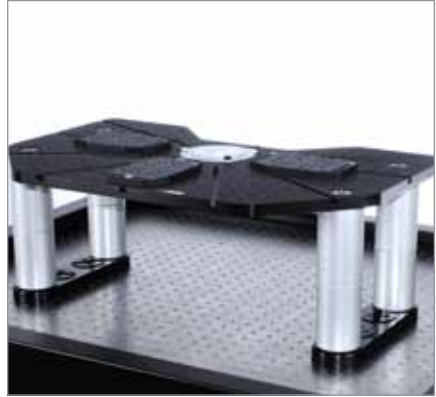
Efficient sample space

The SlicePlatform features an integrated slice chamber in its centre for simplicity and complete stability.

A ferro-magnetic outer ring allows convenient arrangement of magnetic perfusion cannulae. Inside this, a Perspex chamber is held in place with magnets allowing for rapid removal and general ease of use.

This chamber features shallow walls, for maximum positioning freedom beneath the objective and reduced perfusion volumes, which can help with efficient use of expensive solutions.

Alternatively, this system can be removed. Should you wish to use with current equipment and to meet any future needs, the SlicePlatform accommodates industry standard 108 mm and 110 mm diameter chamber adapters.



Universally compatible

The SlicePlatform is designed to perfectly match the focal height range of all major microscope manufacturers.

This is easily achieved by using height adjustable legs which allows the top plate to be raised from between 220mm to 290mm.

To allow complete freedom to arrange your rig on your anti-vibration table, the SlicePlatform features Scientifica's slotted inserts on its feet.

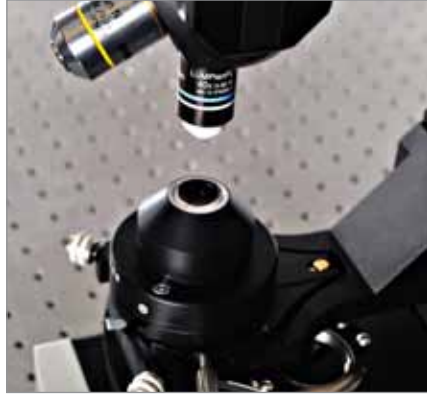
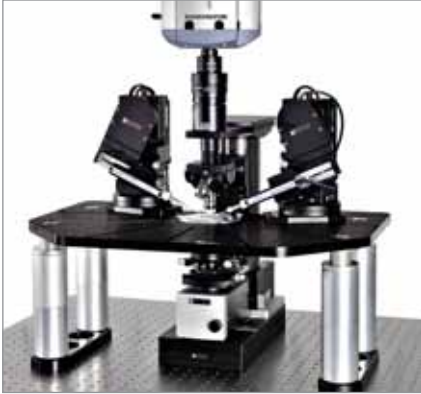
The slotted inserts accept metric or $\frac{1}{4}$ -20 bolts, making them universally compatible with tapped anti-vibration tables.



Complete Setups

SliceScope Pro 2000 & PatchPro 2000

The 2000 systems cost-effectively integrate the upright SlicePlatform into complete patch clamping solutions, complete with micromanipulators, a translation stage and control hardware.



SliceScope Pro 2000

The SliceScope Pro Series has been developed by Scientifica in close collaboration with world leading researchers, to create a completely electrophysiology friendly motorised microscopy system.

It provides a very stable, compact platform with outstanding Olympus optics for efficient, fully-motorised microscopy. The compact frame of the SliceScope allows more equipment to be easily mounted around your sample.

Advantages

Narrow profile enables more space for equipment around your sample

Motorised focus offers fine control

Motorised condenser control for optimal Koehler illumination

Compatible with a full range of accessories, light sources and contrasting techniques

Multiphoton Imaging System upgrade available





Patch Pro 2000

The PatchPro systems are integrated patch clamping solutions that work in conjunction with fixed stage nosepiece focussing scopes from Olympus, Zeiss, Nikon and Leica.

They allow the user to control manipulators, microscope translators and temperature equipment, all from two neat, simple user consoles. Additionally a Z-Focus module is available for a range of microscopes should it be required.

Advantages

Future-proof modular system allows you to add or subtract equipment at a later date

Compatibility guaranteed for peace-of-mind and trouble free operation

Fully upgradeable software control and customisation

The ability to use the LinLab Follow function with current or future microscopes



SlicePlatform

Specifications

Chamber adaptors accepted:	108 mm and 110 mm
Surface material:	Anodised Aluminium (black)
Leg material:	Anodised Aluminium (silver)
Weight:	15.9 kg
Minimum/maximum surface height:	220 mm - 290 mm

Ordering Information

SlicePlatform for upright microscopes (metric carriages)

Order number

SP-2500-00

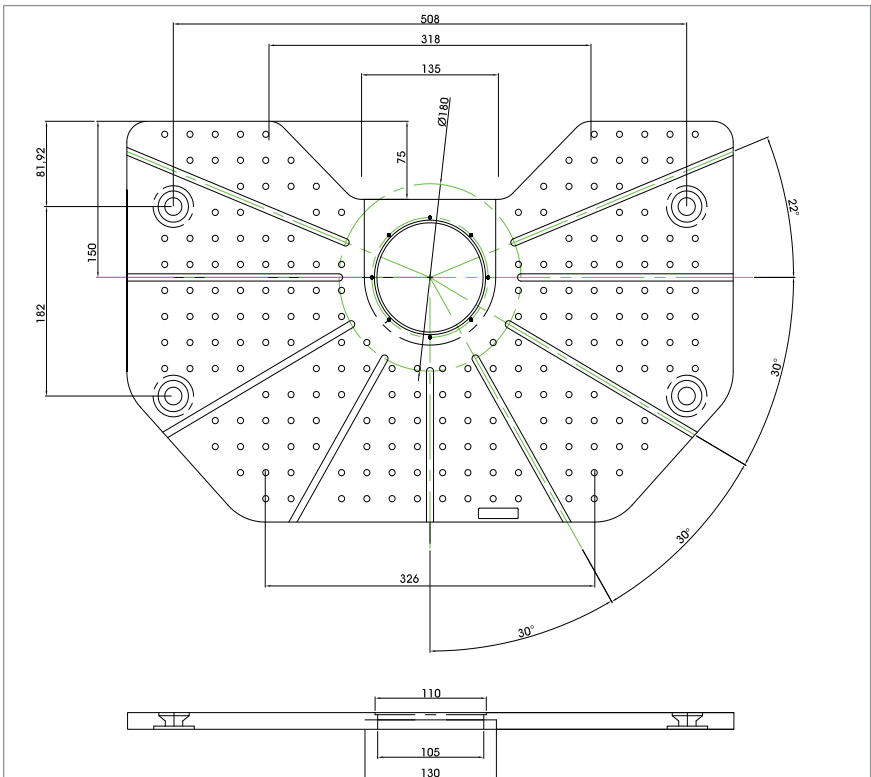
SlicePlatform for upright microscopes (english carriages)

SP-2500-50

All upright SlicePlatforms include the following as standard: 3 manipulator mounting carriages, Slice Recording Chamber kit (Slice Recording Chamber, magnetic mounting ring and 2 perfusion tools), sample plate holder and locking system.

Please speak to a member of our product specialist team if you need assistance in selecting the most appropriate equipment for your requirements.

Schematics (mm)



SlicePlatform Top Plate

Universal Motorised Stage

Specifications

Number of axes:	2
X & Y travel:	50 mm
Step size:	20 nm
Speed (minimum):	0.1 μm per second
(maximum):	4 mm per second
Mechanical resolution:	< 1 μm
Surface material:	Anodised aluminium
Weight:	15.3 kg

Ordering Information

Ordering Information	Order number
Motorised XY Stage	UMS-2500
Motorised XY Stage with Z focus module	UMS-2550
Motorised XY Stage, with SlicePlatform (Metric)	UMS-2400-00
Motorised XY Stage, with SlicePlatform (English)	UMS-2400-50
Motorised XY Stage, Z focus module & SlicePlatform (Metric)	UMS-2450-00
Motorised XY Stage, Z focus module & SlicePlatform (English)	UMS-2450-50
Manual XY Stage	MS-2100
Manual XY Stage with SlicePlatform (Metric)	MS-2300-00
Manual XY Stage with SlicePlatform (English)	MS-2300-50



The manual XY stage

Warranty

Scientifica's success is founded on supplying superior support and application of our significant manufacturing experience. We would therefore really value the opportunity to understand your applications better and to offer no obligation advice on equipment, configurations and compatibility.

All Scientifica instruments are sold with a two-year warranty giving you complete peace of mind. This covers all defects in manufacturing and materials. In this unlikely event, Scientifica will remedy either by repair or replacement.

Our team of customer support engineers is dedicated to providing you with the very best advice and support, should you experience any difficulties with our products. With all products we offer a complete installation support service.

**SlicePlatform with 6 MicroStar
Micromanipulators & the UMS**



A guide to Scientifica mounting range

Movable Microscope



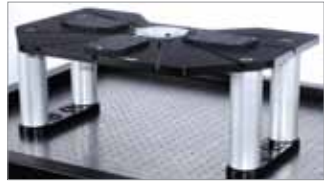
Universal Motorised Stage

OR



Manual XY Stage

+
One of the following
platform systems



SlicePlatform



Post & Platform



Inverted Fixed Platform

The Post & Platform, SlicePlatform and Inverted Fixed Platform are combined with our Universal Motorised Stage (UMS) for smooth microscope movement.

Fixed Microscope

Movable Top Plate



Movable Top Plate Motorised Movable Top Plate

Motorised Movable Base Plate



Inverted Movable Top Plate



Inverted Movable Top Plate Inverted Motorised Movable Top Plate

Complete Systems

All of the mounting options above are available as a package with Manipulators and a Microscope (either SliceScope or most major upright and inverted Microscopes) - a complete turnkey solution for your research.



Revision 1.1

Tel: +44(0)1825 749933
Fax: +44(0)1825 749934
Email: info@scientifica.uk.com
Web: www.scientifica.uk.com

SCIENTIFICA LTD
Kingfisher Court
Brambleside
Bellbrook Industrial Estate
Uckfield
East Sussex
TN22 1QQ
UK

Find out more about the Scientifica range of products and interviews on our channel, including a full demonstration of our SlicePlatform.

www.youtube.com/scientificauk

Scan Me!



Distributed by



MEL: (03) 9480 4999
SYD: (02) 9705 8059
sales@scitech.com.au
www.scitech.com.au



THE QUEEN'S AWARDS
FOR ENTERPRISE:
INTERNATIONAL TRADE
2012