

DOLPHIN-VIEW



IMAGE SYSTEM



DOLPHIN-VIEW HARDWARE SYSTEM

- Full screen monitor for sample positioning and image focus, zoom and iris adjustments
- Easy touch screen TFT LCD operation
- Highly sensitive CCD-camera
- Integrated Epi-white light and slide-out frame 312 dual intensity UV-transilluminator
- Optional Epi-Green/Blue LED
- Compact, space saving darkroom
- Easy image transfer via High-Speed USB
- Upgradeable with multiple languages-interface
- UV-safety switch
- Connection for optional thermal printer for direct print-outs

APPLICATIONS: Fluorescent or visibly stained DNA or protein gels, visualisation and documentation of e.g. blotting membranes, X-ray film and bacterial colony plates



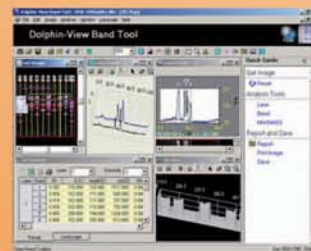
DOLPHIN-VIEW BAND TOOL

- Basic tool for analysing gel images
- Automatic lane and band detection
- Image profile and 3-D display
- User-friendly operation with quick guide
- Supports various file-formats
- Data-analysis within one minute
- Supports GLP/GMP-mode



OPERATION SYSTEM

- Settable image integration from 0 to 256 frames
- Enables loading of TIFF files from USB for viewing or printing
- Adjustable image brightness, contrast and gamma value
- Images printed with time, date, name and integration conditions
- User default frequent operation settings



Dolphin-View Band tool

Dolphin-View Operation System



Dolphin-View Image System

Specifications

CCD-camera

Sensor size (mm)	6.4 x 4.8
Sensor	½ "Interline-Transfer Super HAD CCD"
Resolution	EIA: 768 x 494; CCIR: 752 x 582
S/N ratio	≥ 56 dB
Zoom lens	8~48 mm f 1.2
Pixel depth	8 bit
Filter	Close-up lens and amber filter

Darkroom

Dimension (L x W x H)	39 x 45 x 57 cm
Slide-out frame	Built-in
Illumination	Epi-white light
UV-transilluminator	312 nm, 6 x 8 Watt tubes, 25 x 25 cm filter size
Power	100 V, 120 V & 230 V, 50-60 Hz
Control panel/display	Touch screen TFT LCD
Image file format	TIFF
Port	USB 2.0

PC analysis software

Dolphin-View band tool analysis software

Optional

Illumination	Epi-Green/Blue LED
Thermal printer	Analog thermal printer
Converter plate	UV/White light converter plate
Software	Dolphin-1D analysis software

Operating conditions

Temp. 0-40 °C,
Humidity: 10-90 % R.H. Non-condensing

Ordering Information

Item #	Description
1147001USB	Dolphin-View Image System/USB, 120 V /50-60 Hz, includes CCD-camera, lens, darkroom with operation system, MD-25 UV transilluminator (25 x 25 cm), Dolphin-View band tool analysis software (Dolphin-1D basic analysis software)
1147002USB	Dolphin-View Image System/USB, 230 V /50-60 Hz, includes CCD-camera, lens, darkroom with operation system, MD-25 UV transilluminator (25 x 25 cm), Dolphin-View band tool analysis software (Dolphin-1D basic analysis software)
1147003USB-60J	Dolphin-View Image System/USB, 100 V /60 Hz, includes CCD-camera, lens, darkroom with operation system, MD-25 UV transilluminator (25 x 25 cm), Dolphin-View band tool analysis software (Dolphin-1D basic analysis software)
1147003USB-50J	Dolphin-View Image System/USB, 100 V /50 Hz, includes CCD-camera, lens, darkroom with operation system, MD-25 UV transilluminator (25 x 25 cm), Dolphin-View band tool analysis software (Dolphin-1D basic analysis software)
1144001	Dolphin-1D software
1146001	UV/White light converter plate
1146002	Protection cover for gel excision
1147004	Mitsubishi P-93W analog thermal printer
1147005	Sony UP-895MD analog thermal printer
1147006	Mitsubishi K-65HM Blue dye image print pack, 215 print/roll, 4 rolls/box
1147007	Sony UPP-110HG High glossy thermal paper, 240 prints/roll, 5 rolls/box
1142001	MD-20 UV-transilluminator, 120 V/50-60 Hz, 312 nm, 20 x 20 cm filter size
1142002	MD-20 UV-transilluminator, 230 V/50-60 Hz, 312 nm, 20 x 20 cm filter size
1142003	MD-25 UV-transilluminator, 120 V/50-60 Hz, 312 nm, 25 x 25 cm filter size
1142004	MD-25 UV-transilluminator, 230 V/50-60 Hz, 312 nm, 25 x 25 cm filter size
1142005	MD-20 UV-transilluminator, 100 V/50-60 Hz, 312 nm, 20 x 20 cm filter size
1142006	MD-25 UV-transilluminator, 100 V/50-60 Hz, 312 nm, 25 x 25 cm filter size
1142007	HD-20 UV-transilluminator, 120 V/50-60 Hz, 365 nm, 20 x 20 cm filter size
1142008	HD-20 UV-transilluminator, 230 V/50-60 Hz, 365 nm, 20 x 20 cm filter size
1142009	HD-25 UV-transilluminator, 120 V/50-60 Hz, 365 nm, 25 x 25 cm filter size
1142010	HD-25 UV-transilluminator, 230 V/50-60 Hz, 365 nm, 25 x 25 cm filter size
1142011	HD-20 UV-transilluminator, 100 V/50-60 Hz, 365 nm, 20 x 20 cm filter size
1142012	HD-25 UV-transilluminator, 100 V/50-60 Hz, 365 nm, 25 x 25 cm filter size

Wealtec Corp.

1885 Meadowvale Way,
Sparks, NV 89431, U.S.A.
Tel: +1- 775-351-2066 Fax: +1-7



Melb : (03) 9480 4999
Syd : (02) 9705 8059
Email: sales@scitech.com.au
www.scitech.com.au

