

The MetaVue System

COST-EFFECTIVE INTEGRATED SYSTEM FOR BIOIMAGING



→ DIGITAL PHOTOGRAPHY

→ CELL COUNT

→ FLUORESCENCE

→ IMAGE PROCESSING

→ IMAGE ANALYSIS

The MetaVue™ Imaging System is the cost-effective solution for basic imaging applications such as digital photography, multi-wavelength fluorescence, image processing and image analysis.

MetaVue Software is a simple, easy-to-use system for acquiring and processing images, performing graphics functions, and archiving and retrieving images.

ACQUISITION

For multi-mode microscopy, MetaVue Software is able to acquire multiple fluorescence wavelengths combined with a transmitted light image.

Images can be stacked into one file and saved as a Stack file format, then processed or measured all at once in one easy step.

With the MetaVue System's modular architecture, expanding the software is simple and allows the system to grow as your imaging needs change.

Compatibility with MetaMorph® and MetaFluor® Software offers a well-defined upgrade path.

Acquisition with MetaVue Software

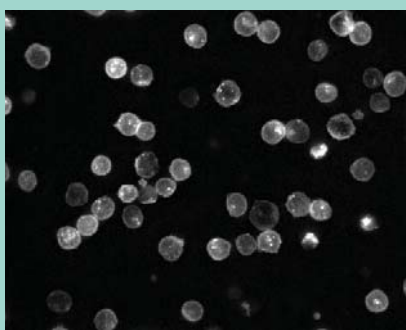
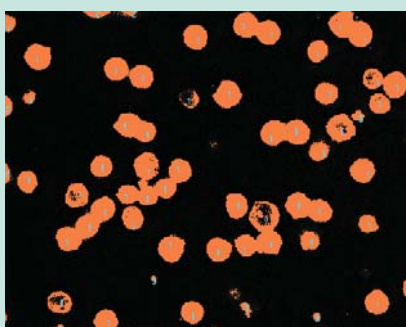


Image Analysis



Data Export to Text File or Spreadsheet

| | A | B | C | D | E |
|----|-------------------|----------|----------|--------------|--------------------|
| 1 | Image Name | X | Y | Class | Pixel Value |
| 2 | tophateafter | 53 | 74 | Class 1 | 1945 |
| 3 | tophateafter | 178 | 93 | Class 1 | 6843 |
| 4 | tophateafter | 221 | 104 | Class 1 | 3240 |
| 5 | tophateafter | 192 | 180 | Class 1 | 3838 |
| 6 | tophateafter | 309 | 45 | Class 1 | 3916 |
| 7 | tophateafter | 381 | 22 | Class 1 | 4379 |
| 8 | tophateafter | 425 | 36 | Class 1 | 2789 |
| 9 | tophateafter | 534 | 24 | Class 1 | 2007 |
| 10 | tophateafter | 573 | 44 | Class 1 | 4086 |
| 11 | tophateafter | 498 | 66 | Class 1 | 1677 |
| 12 | tophateafter | 518 | 130 | Class 1 | 5060 |
| 13 | tophateafter | 464 | 189 | Class 1 | 1965 |
| 14 | tophateafter | 424 | 200 | Class 1 | 2544 |
| 15 | tophateafter | 358 | 130 | Class 1 | 1836 |
| 16 | tophateafter | 101 | 365 | Class 1 | 5219 |
| 17 | tophateafter | 40 | 265 | Class 1 | 3893 |
| 18 | tophateafter | 122 | 290 | Class 1 | 1181 |
| 19 | tophateafter | 156 | 246 | Class 1 | 4527 |
| 20 | tophateafter | 161 | 318 | Class 1 | 3134 |
| 21 | tophateafter | 136 | 341 | Class 1 | 5086 |

COMPUTER REQUIREMENTS

- Intel® Pentium-4 processor or later
- Microsoft® Windows® XP
- CD-ROM drive
- 512MB or more system memory (RAM)
(more memory may be required for processing large image data sets)
- 200MB free hard disk space for program only
(image storage requires more space)
- 24-bit graphics display

STANDARD FEATURES

- Binary, 8- 16-, 24- and 48-bit (RGB) image and stack display and processing including arithmetic operations, shading correction and background subtraction
- Binary image morphology operators
- Color combine and color separate 24- or 48-bit images
- Regions of interest tools
- Auto-expose from digital cameras
- Image annotation
- QuickTime® or AVI formats for the creation of movies
- Image histogram
- Customizable toolbars and windows
- Data logging to text file or spreadsheet programs such as Microsoft Excel®
- Automation through journals and taskbars

ACQUISITION OPTIONS

- Digital CCD cameras, both monochrome and color, including: cooled, full frame, frame transfer, interline, back thinned, intensified and on-chip multiplication gain from major manufacturers
- Video cameras, both monochrome and color, including: RS-170, CCIR, on-chip integration, intensified, CCD and tube from major manufacturers

OPTIONAL FEATURES

- Morphometry analysis
- Brightness measurements
- Image overlays

SUPPORT

- Technical support via phone, e-mail or online at support.universal-imaging.com
- Electronic documentation

FOR MORE INFORMATION

For complete details of features and options, consult our website at www.moleculardevices.com

SALES OFFICES

- USA & Canada +1-800-635-5577
- Brazil +55-11-3616-6607
- China (Beijing) +86-10-6410-8669
- China (Shanghai) +86-21-6887-8820
- Germany +49-89/96-05-88-0
- Japan (Osaka) +81-6-6399-8211
- Japan (Tokyo) +81-3-5282-5261
- South Korea +82-2-3471-9531
- United Kingdom +44-118-944-8000

Check our web site for a current listing of our worldwide distributors.
www.moleculardevices.com

FOR RESEARCH USE ONLY. NOT FOR USE IN DIAGNOSTIC PROCEDURES.

The trademarks used herein are the property of Molecular Devices, Inc. or their respective owners.

Specifications subject to change without notice.



Melb : (03) 9480 4999
 Syd : (02) 9705 8059
 Email: sales@scitech.com.au
www.scitech.com.au

